

LIVE  
JOYOUS  
LIVE  
LUXURIOUS



SATYAM  
ALTURA

2 & 3 BHK JOYOUS LIVING



# GROUND floor plan

## LEGEND

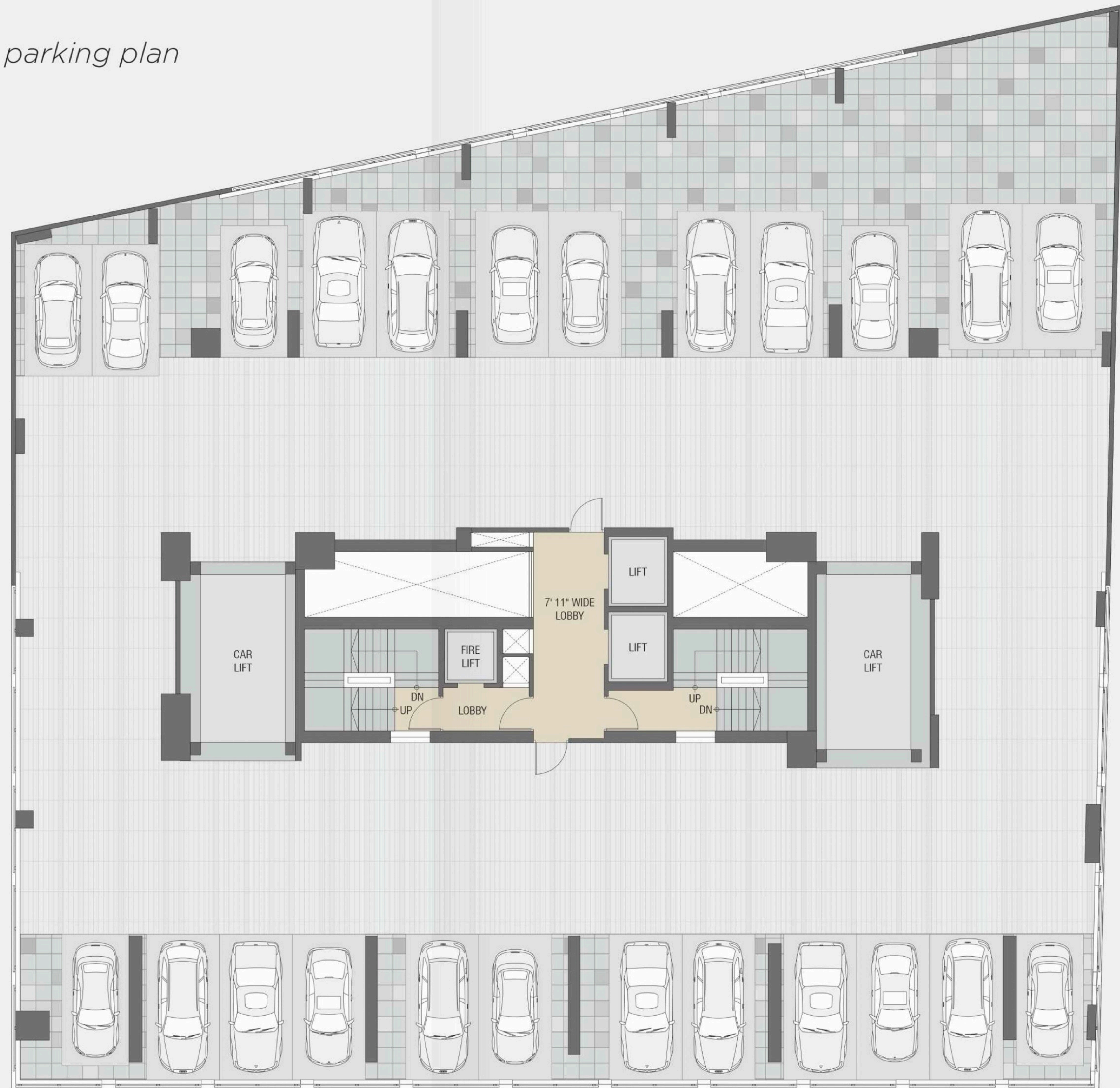
- 01 ENTRANCE GATE
- 02 SECURITY CABIN
- 03 ENTRANCE LOBBY
- 04 LOBBY
- 05 METER ROOM
- 06 TOILET
- 07 DRIVER'S ROOM
- 08 OWC
- 09 RAMP
- 10 CAR PARKING





TYPICAL podium parking plan

1st To 6th



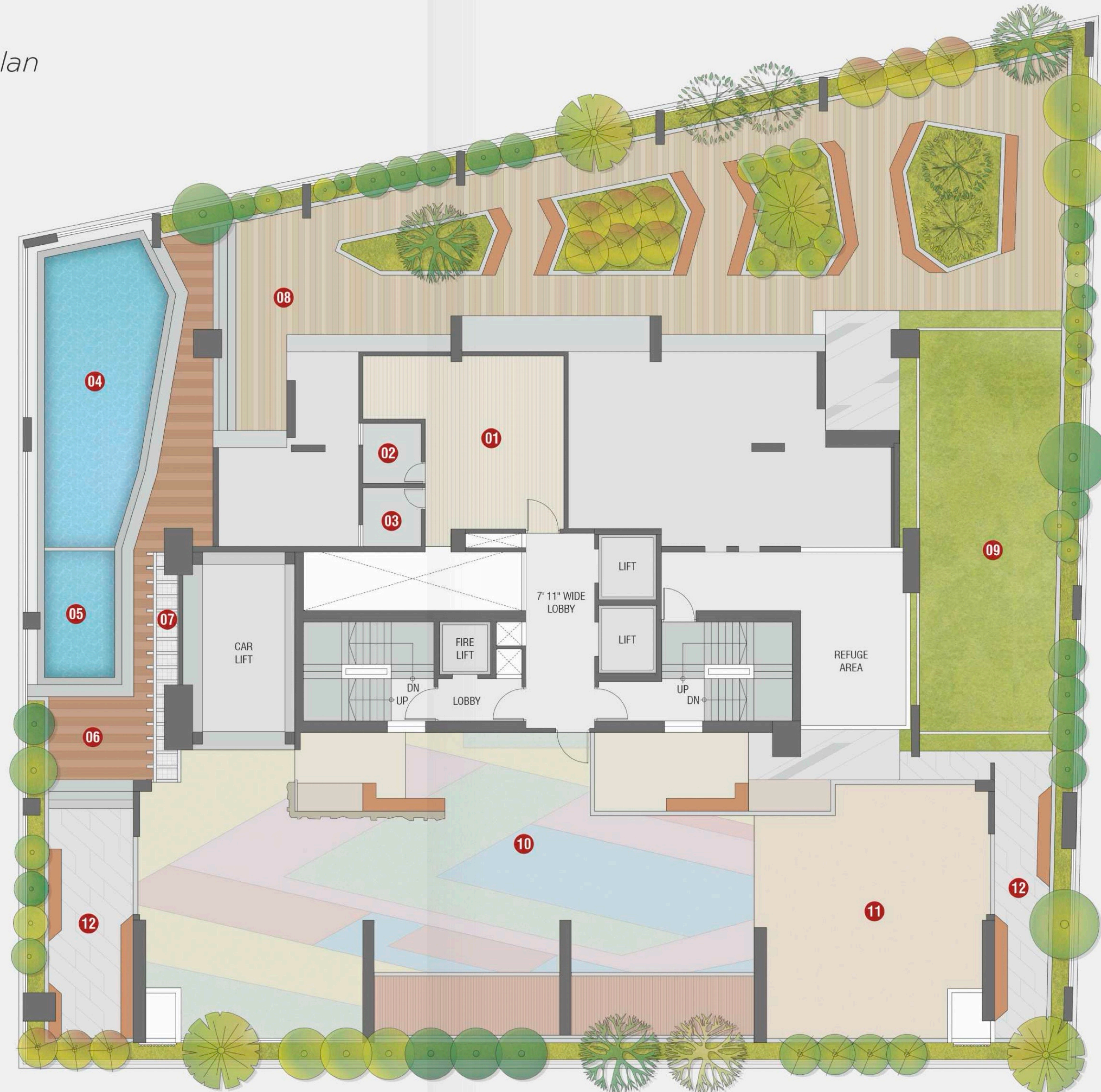


# PODIUM *floor plan*

## 7th Floor

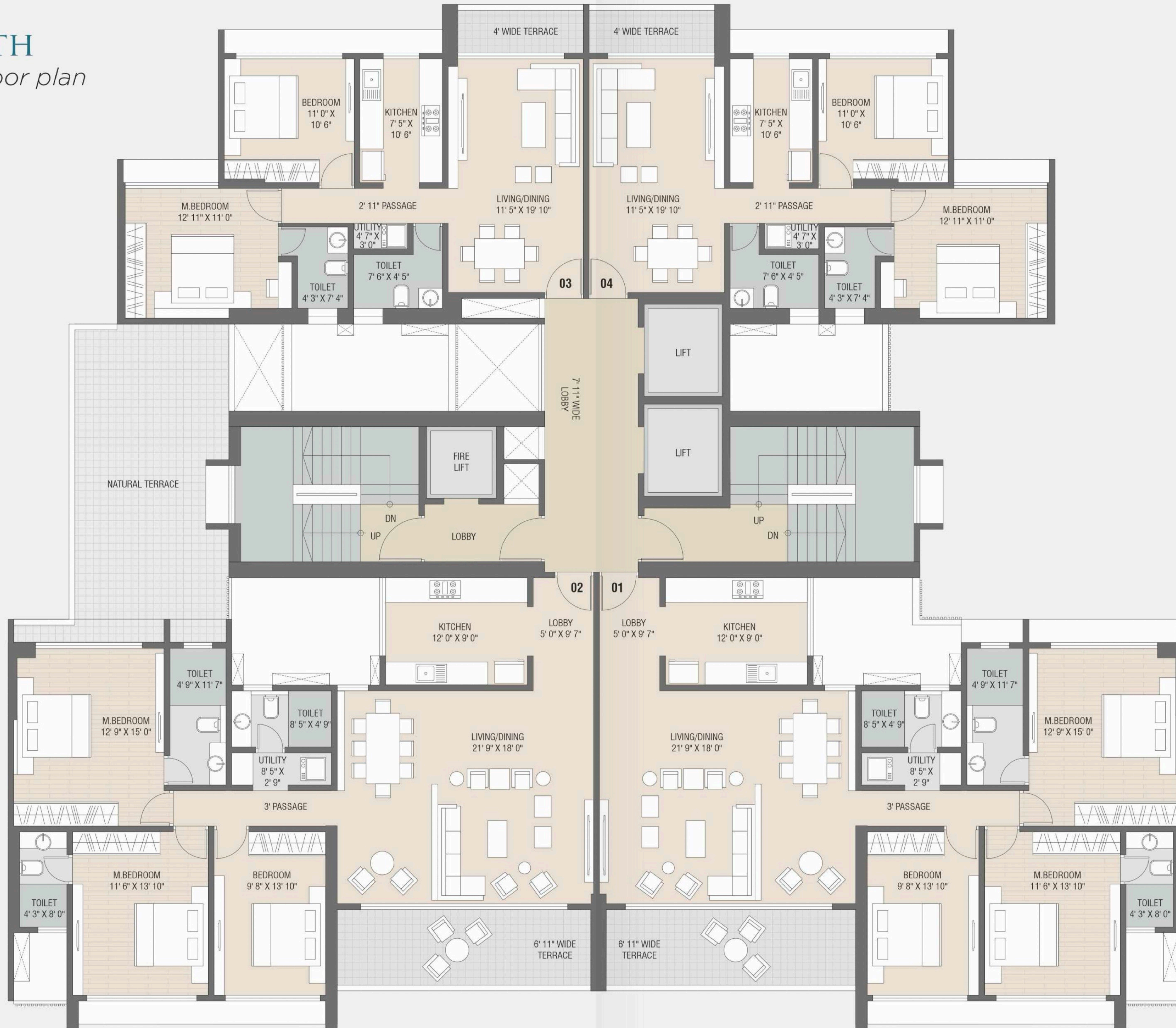
### LEGEND

- 01 FITNESS CENTER
- 02 WOMEN TOILET
- 03 MEN TOILET
- 04 INFINITY POOL
- 05 KIDS POOL
- 06 DECK
- 07 GROVE SEATING
- 08 JOGGING TRACK
- 09 NET CRICKET
- 10 KIDS PLAY AREA
  - HOPSCOTCH
  - CLIMBING WALL
  - FOOS BALL
  - MULTI PLAY STATION
  - TRAMPOLINE ZONE
  - CHILDREN HANGING CLIMBERS
- 11 PLAY GROUND
  - SWING
  - SEE SAW
  - MERRY GO ROUND
  - SLIDES
- 12 SEATING





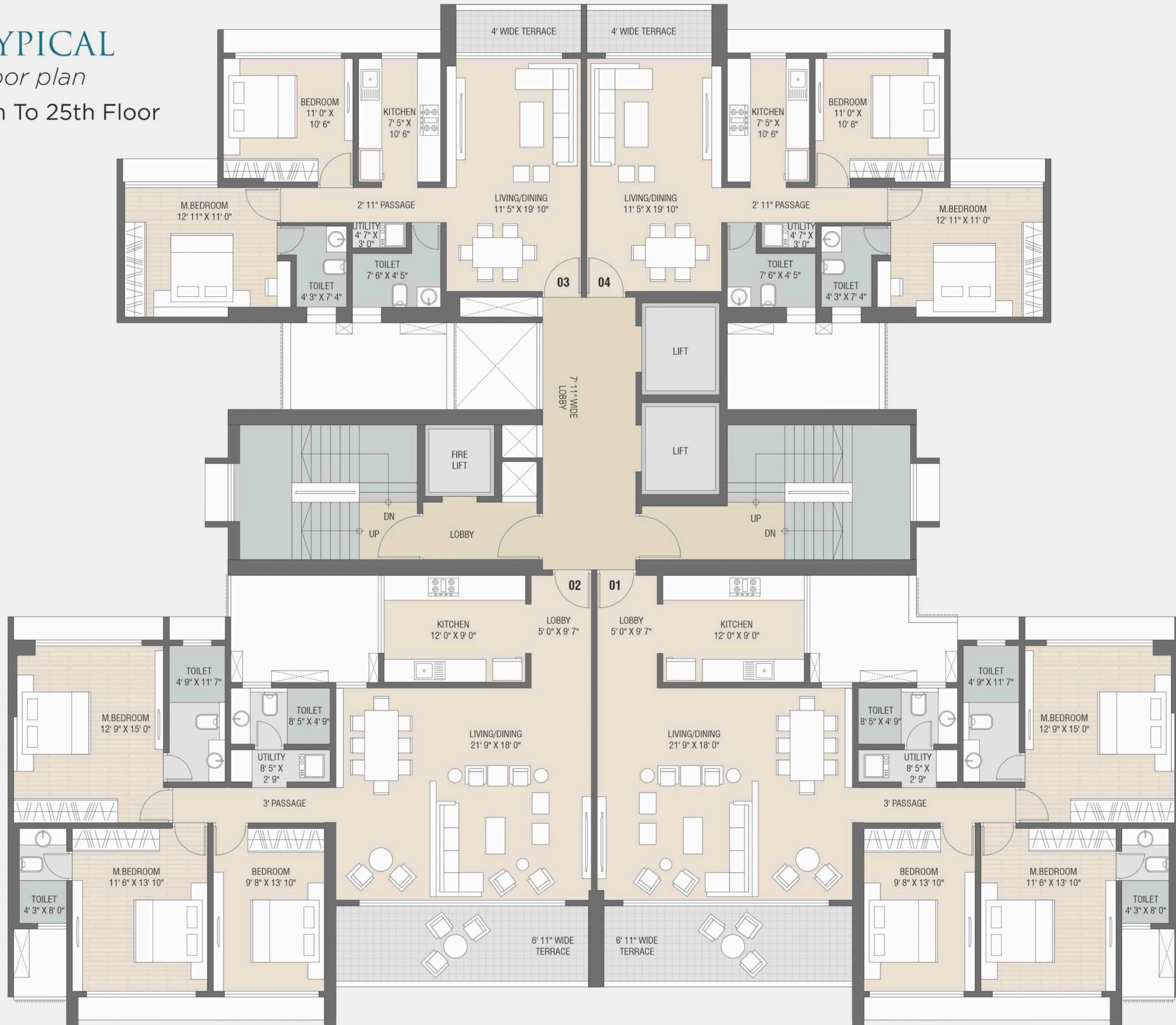
# 8TH floor plan





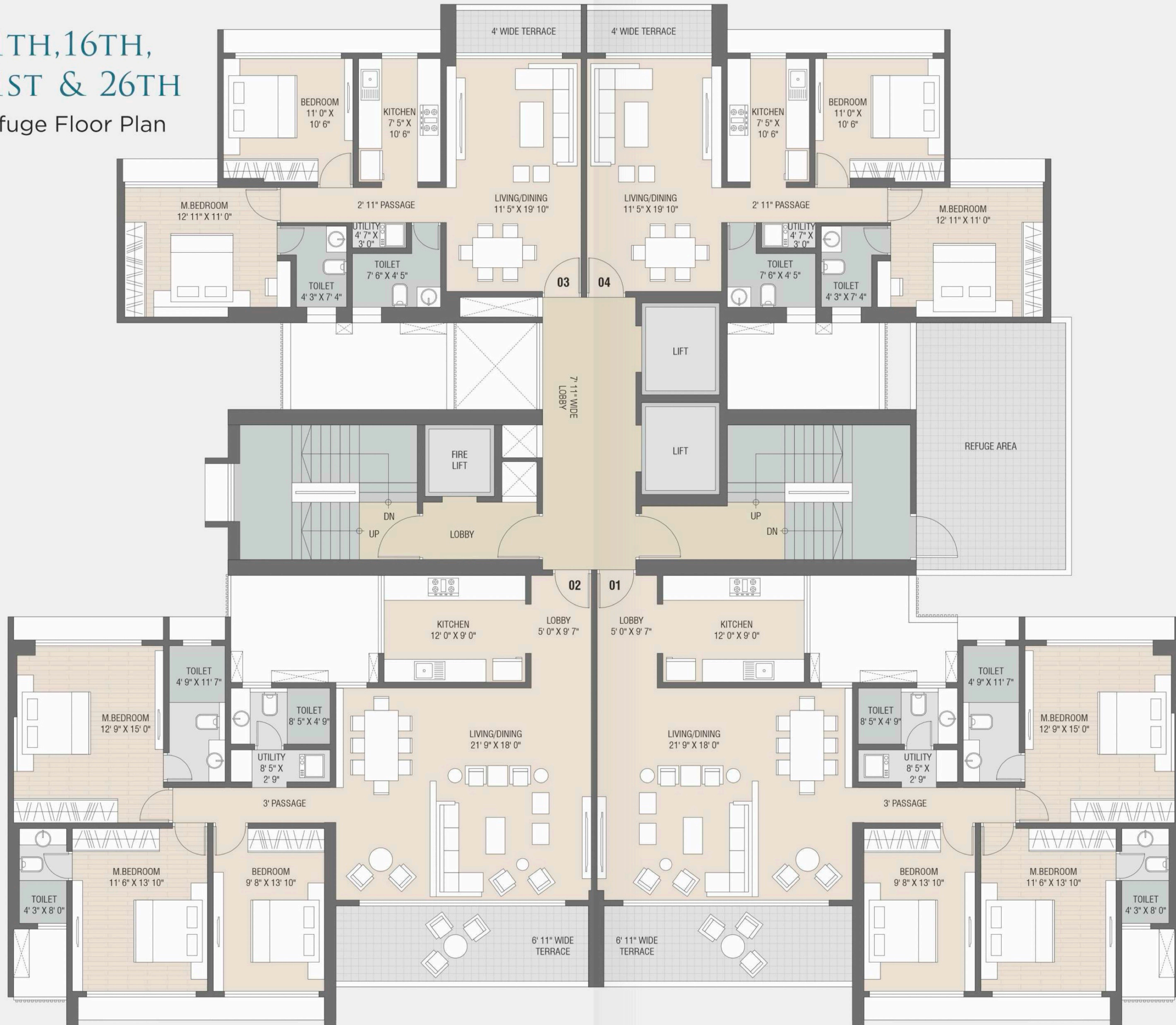
# TYPICAL floor plan

9th To 25th Floor





# 11TH, 16TH, 21ST & 26TH Refuge Floor Plan





# 23RD floor plan

## Recreation Plan

### LEGEND

- 01 Yoga Room
- 02 Meditation Zone
- 03 Reading Corner
- 04 Monsoon Pavilion
  - Cricket Screen Watching
  - Daycare Area
  - Senior Citizen Zone
  - Teenagers Zone
  - Billiards
  - Table Tennis
  - Carom
  - Board Games
  - Air Hockey







A LOCATION THAT  
GIVES ACCESS  
TO YOUR EVERY DESIRE

**CONNECTIVITY**

- Sanpada Railway Station 4 Min
- Juinagar Railway Station 6 Min
- Vashi Railway Station 4 Min
- Moraj Circle 2 Min
- Palm Beach Road 2 Min
- Thane Belapur Junction 5 Min
- Vashi Flyover 5 Min
- Navi Mumbai International Airport 4 Min



**HEALTH**

- New Millenium Multi-Specialty Hospital 4 Min
- MPCT Hospital 4 Min
- Hiranandani Hospital 15 Min
- MGM Hospital 10 Min



**COMMERCIAL HUBS**

- G-Square Business Park 4 Min
- Haware Infotech Park 4 Min
- Satra Plaza 5 Min



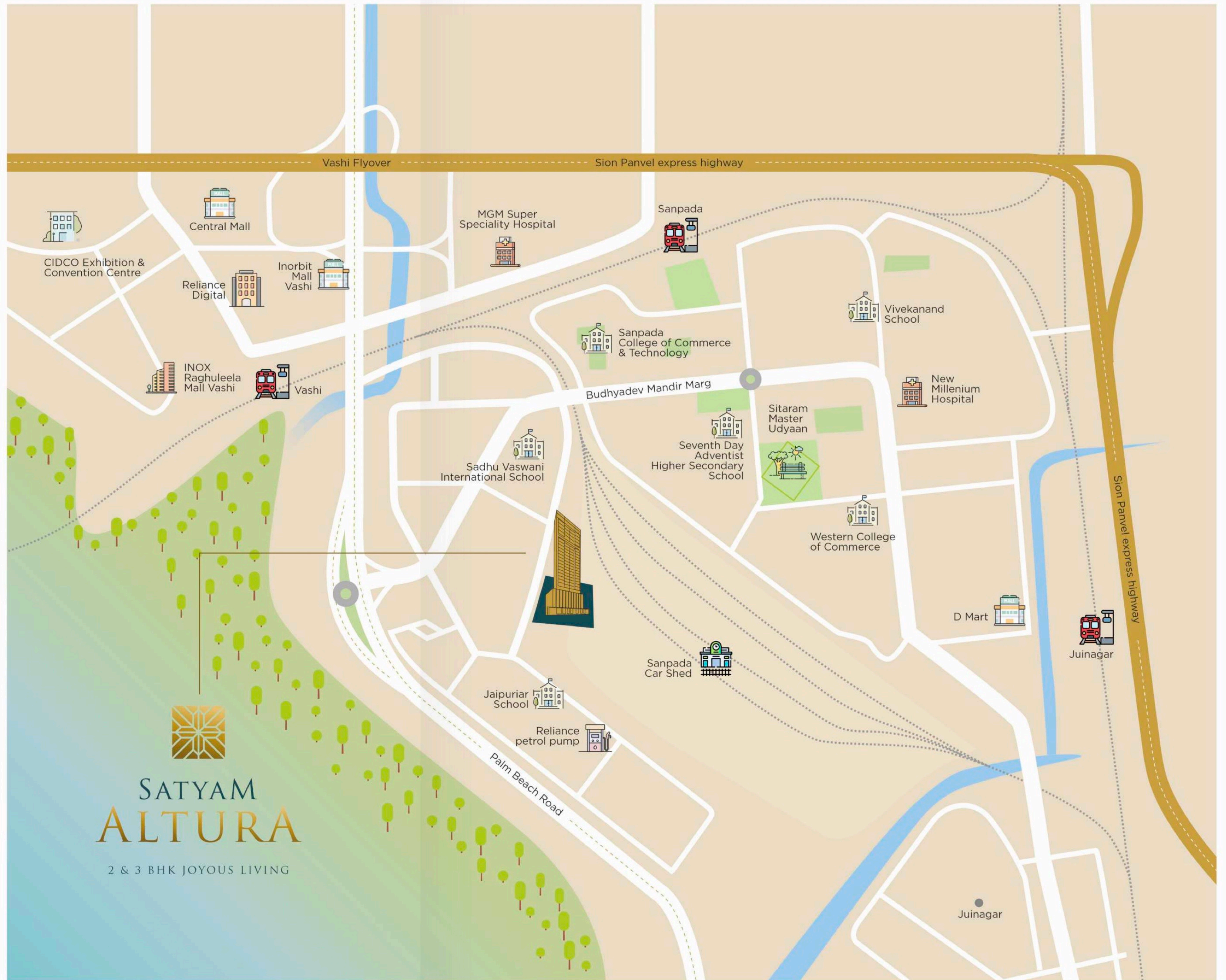
**SHOPPING**

- D-Mart 5 Min
- Inorbit Mall 5 Min
- Raghuleela Mall 5 Min
- Seawood grand central 15 Min

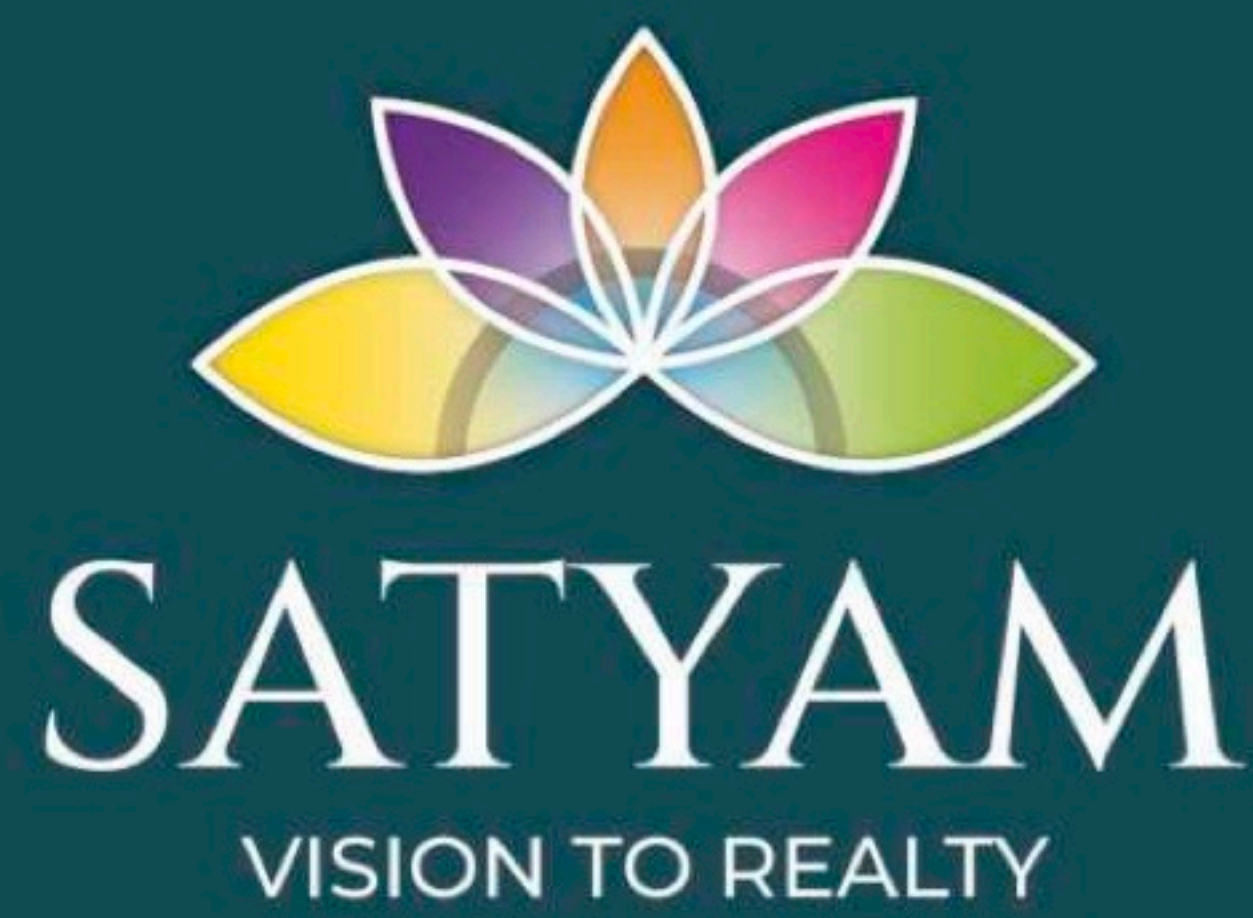


**EDUCATION**

- Ryan International School 4 Min
- Sadhu Vasvani International School 2 Min
- Indira Institute of Business Management 4 Min
- Sanpada College of Commerce & Technology 4 Min
- DY Patil Medical College 4 Min
- Jaipuriar School 5 Min



A PROJECT BY  
**SATYAM LIFESCAPES LLP**



---

Architect:  
**THE FIRM ARCHITECTURE**

---

RCC Consultant:  
**JW Consultants LLP**

---

Legal Advisor:  
**Adv.Minal B.khona**

---



Maha RERA Reg. No.: **P51700047665**  
[maharera.mahaonline.gov.in](http://maharera.mahaonline.gov.in)

Disclaimer: The Plans, Drawings, Specifications, Amenities and other details herein are indicative and tentative and are subject to the approval of respective authorities. All rendering, maps are artists conception and not actual depiction of building and landscaping and the Developer reserves the right to make any alteration, addition or amendments as may be required or necessitated from time to time without prior notice and obligation. This Printed material does not constitute an offer and/or contract of any type between the Developer and the recipient. Any purchase / lessee of this development shall be governed by the terms and conditions of the Agreement for Sale / lease entered between parties and no details in this printed material shall in any way govern such transaction.